

2 - 4
PLAYERS



Peppa Pig

Ages
3+

Licensee:
FUNSKOOL

TREASURE HUNT GAME

Contents

- 1 Game Board
- 4 Peppa Pig Characters and Bases
- 4 Treasure Chest Cards
- 32 "X" Marks the Spot Treasure Tokens
- 1 Spinner
- 3 Pop up Play Piece (Pirate Ship, Sand Castle, Treasure Chest)



Game Set-up

- Unfold the Game Board and place face up on a table or smooth surface. Place the spinner next to the Game Board.
- Insert the 3 Pop-Up Game Board Accessories on the board as shown (Diagram A).
- Gently remove the "X" Marks the Spot Treasure Tokens from the sheet.
- Shuffle the Treasure Tokens and place them face down on each of the 32 Purple "X" spaces on the Board (Diagram B).
- Each Player selects a Treasure Chest Card, placing the card face up in front of them.
- Each Player selects a Character Pawn and places it in the stand (Diagram C).
- Character Pawns are placed at the START area of the Game Board.

Let's Play

Objective of the Game:

To fill all 6 spaces on your Treasure Chest Card with the matching Treasure Tokens.

Playing the Game

- The game starts with the youngest player and continues clockwise.
- The first player spins the Spinner and moves their Character Pawn forward the number of spaces indicated on the Spinner.
- If the player's pawn lands on a purple "X" token they may pick up the token and look at the other side without letting the other player see.
 - The player may add the token face up to their Treasure Chest Card if it matches one of the empty spaces on their card.
 - If the token does not match one of the empty spaces on their card, the token must be returned to its original place, face down.
 - If the player already has this token, the token must be returned to its original place, face down.
- If a player turns over a **Grandpa Pig** token, they must immediately move their pawn back to Grandpa's Ship, returning the token face down to its original place.
- If the Spinner Stops on **Muddy Puddles**, the player must move their pawn to any Muddy Puddle space on the board that is not occupied.
- If the spinner stops on **Miss a Turn**, the player misses a turn and the next player may spin.
- Play continues until one player has filled their card with the matching tokens from the Game Board.

Who wins?

The first Player to complete their Treasure Chest Card with the matching Treasure Tokens **WINS!**



Diagram A

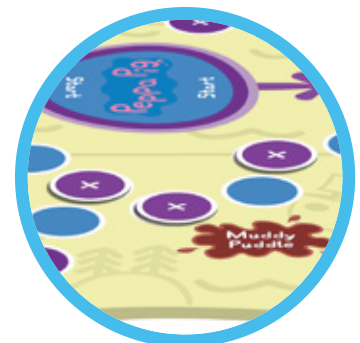


Diagram B

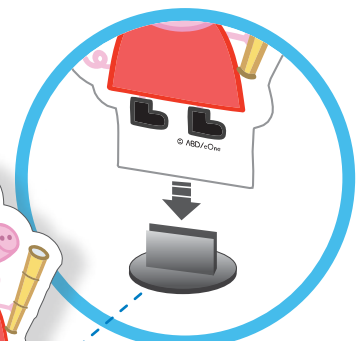


Diagram C

www.peppapig.com

Peppa Pig © Astley Baker Davis Ltd/ Entertainment One UK Ltd 2003.

THE FANTASTIC FACTORY NAME AND LOGO () ARE TRADEMARKS OF THE FANTASTIC FACTORY. MADE IN INDIA.

entertainment One



f OfficialPeppaPig